

State of Wyoming Corner Record

(In compliance with the CORNER PERPETUATION AND FILING ACT, Wyoming Statutes, 1997 Section 33-29-140 et. seq., and the Rules and Regulations of the Board of Professional Engineers and Professional Land Surveyors)

Reverse side of this form may be used if more space is needed.

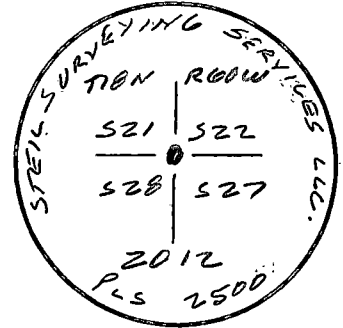
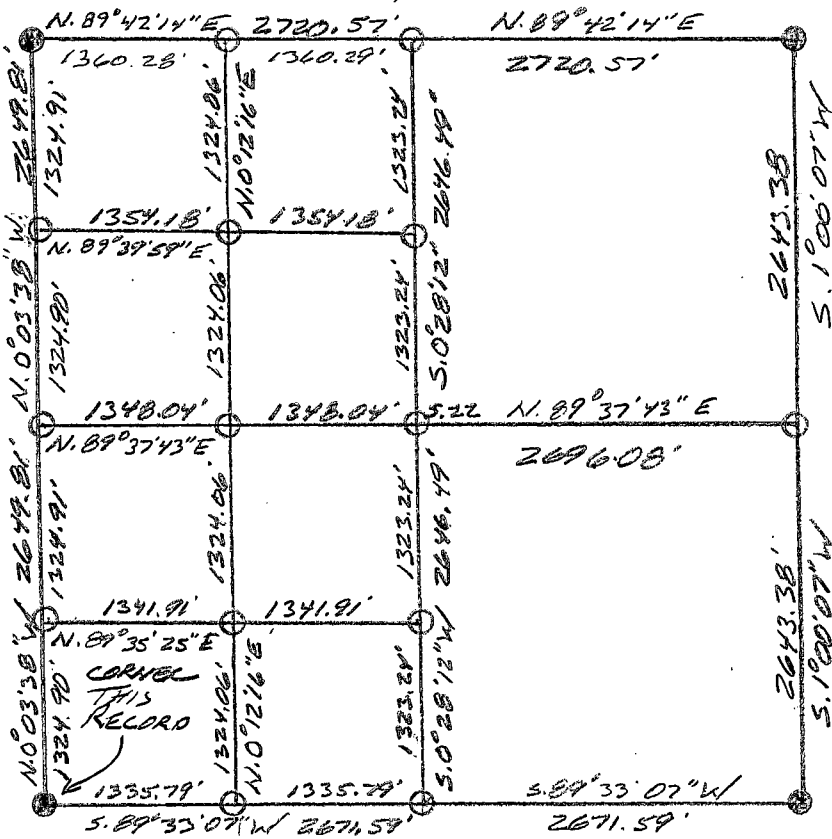
Record of original survey and citation of source of historical information (if corner is lost or obliterated). Description of corner monumentation evidence found and/or monument and accessories established to perpetuate the location of this corner. Sketch of relative location of monument, accessories, and reference points with course and distance to adjacent corner(s) (if determined in this survey). Method and rationale for reestablishment of lost or obliterated corner.

RECORD: SET A SANDSTONE 16X12X6 WITH 3 NOTCHES ON THE EAST SIDE AND 2 NOTCHES ON THE SOUTH SIDE FOR CORNER TO SEC'S 21, 22, 27 & 28.

MONUMENT FOUND: FOUND A WELL SET SANDSTONE 6"X10' PROJECTIONS 6" ABOVE GROUND SURFACE, ALLEGED STONE.

MONUMENT SET: RESET IN PLACE A 5/8"X24" REBAR WITH A 3/4" ALUMINUM CAP PROJECTIONS 0.4' ABOVE GROUND SURFACE WITH THE CAP STAMPED AS SHOWN. BURIED STONE ALONGSIDE.

REFERENCES: NO REFERENCE WERE SET. CAP LIES IN A E-W BARBED WIRE FENCE.



Date of Field Work: 4-14-12 Office Reference: 12187

Monument Inscription

Cross Index Plat

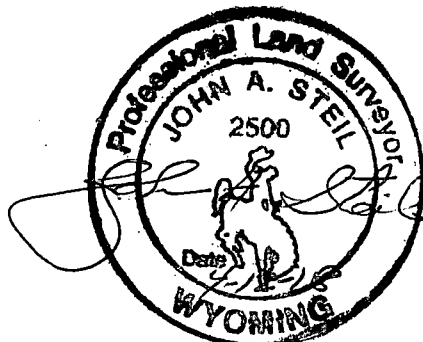
Firm/Agency, Address

STEIL SURVEYING SERVICES L.L.C.
1102 WEST 19th STREET
CHEYENNE WY 82001

Telephone Number: **(307) 634-7273**

This corner record was prepared by me or under my direction and supervision.

SEAL & SIGNATURE



Corner Name SOUTHWEST COR. Section 22, T18 N, R60 W, 6th P.M. Cross-Index No.: R-13
 County: LARAMIE Wyoming

SBRPEPLS/PLSW: March 1994; PLSW January 1998